



# Care Connect Washington

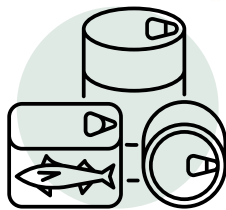


Have you **tested positive** for COVID-19?  
Do you live in **Washington State**?

Get **FREE** support during  
isolation for COVID-19!



personal  
care kits



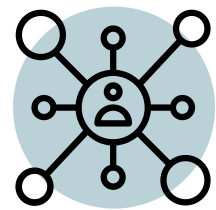
shelf-stable  
food kits



fresh food  
orders delivered  
to you



financial  
assistance for  
paying bills\*



other local  
resources or  
services that are  
needed

\*subject to vendor participation

Get **FREE** COVID-19 support by calling  
**1-800-525-0127, then press #**

If you or someone you know tested positive for COVID-19 and need food or other assistance to isolate at home, contact the COVID-19 Information Hotline at 1-800-525-0127, then press #. Language assistance is available. The hotline hours are:

- 6 a.m. to 10 p.m., Monday
- 6 a.m. to 6 pm., Tuesday through Sunday and observed state holidays

## For more information:

visit [olympicch.org/care-connect](https://olympicch.org/care-connect)  
email [care@olympicch.org](mailto:care@olympicch.org)  
call 360-302-6046

Olympic  
COMMUNITY of HEALTH